

Safety News

October 22, 2008

Blue Ember Grills: Ask all Blue Ember grill owners to ensure proper assembly of burner hoses.

IMPROPER ASSEMBLY.

If the cover assembly is incorrectly placed onto the grill cabinet by a retailer's assembler or by the consumer in such a fashion that the burner hoses are placed to the rear of and pinched against the installed heat shield, then the hoses may eventually fail from exposure to excessive heat. This situation occurs most often when the assembler or consumer fails to remove the packaging material around the hoses that connects them to the underside of the cover assembly. There is no manufacturing defect in the grill or its component parts, and no danger unless improperly assembled. (FIG 1)

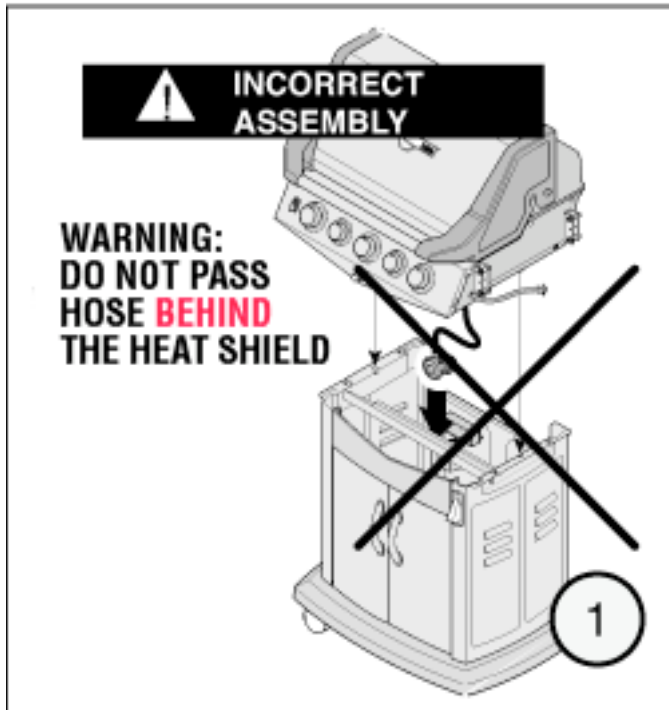
There is no manufacturing defect in the grill or its component parts, and no danger unless improperly assembled. (FIG 1)

To promote the safe use of gas grills, Fiesta Gas Grills recommends the following:

1. THE CUSTOMER NEEDS TO ENSURE THAT THE HOSE IS UNTIED FROM BURNER BEFORE FINAL ASSEMBLY (FIG 2)
2. CUSTOMER SHOULD RELEASE THE TIE AND PASS THE HOSE THROUGH THE GAP BETWEEN HEAT SHIELD AND FRONT PANEL BEFORE ASSEMBLING THE FIREBOX (BASE) TO THE CABINET (FIG. 3)
3. NATURAL GAS HOSE MUST PASS THROUGH THE GAP AND BE DIRECTED TO BOTTOM OF CABINET. PROPANE HOSE/REGULATOR MUST ALSO PASS THROUGH THE GAP TO THE CYLINDER UNDERNEATH THE HEAT SHIELD. (FIG 4)
4. **WARNING! HOSE MUST NOT TOUCH ANY PART OF THE FIRE BOX**

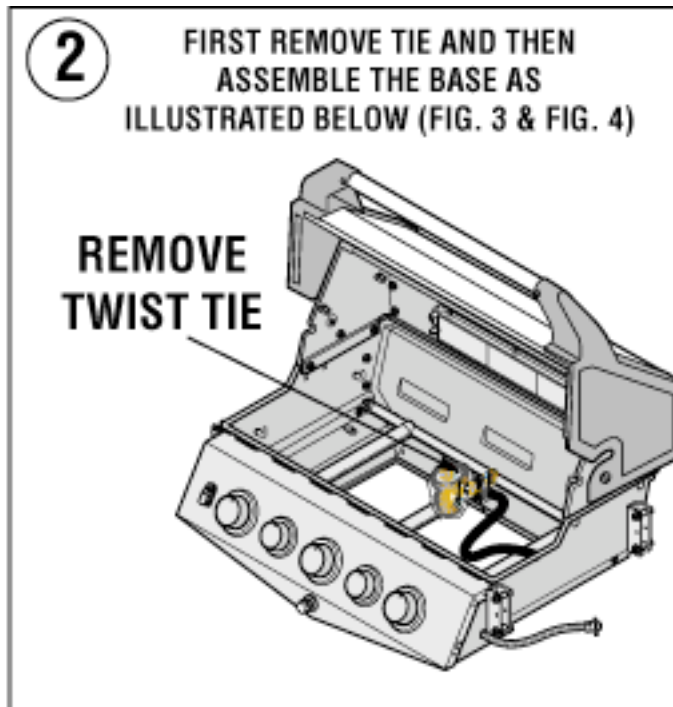
IMPROPER HOSE ASSEMBLY

FIGURE 1



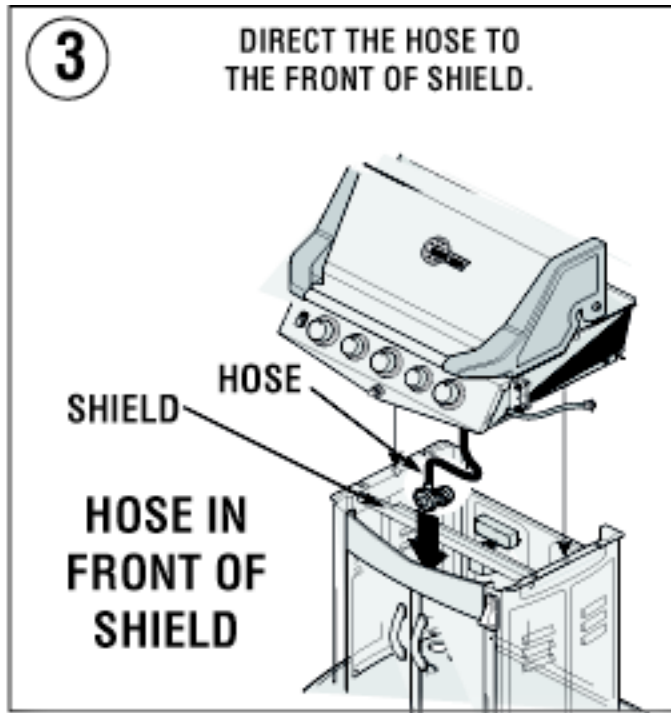
CORRECT HOSE ASSEMBLY

FIGURE 2



CORRECT HOSE ASSEMBLY

FIGURE 3



CORRECT HOSE ASSEMBLY

FIGURE 4

